

A large circular graphic with a yellow-to-orange gradient and a halftone dot pattern border. The text 'Walnut Country' is written in a black script font across the center, with 'high tech luxury homes' in a smaller, black, sans-serif font below it, underlined.

*Walnut Country*  
high tech luxury homes

It's the perfect neighborhood you've been looking for!  
*Peaceful • Elegant • Warm • Safe*  
Friendly community surrounding with many attraction within walking distance.  
A wonderful place to live in.



WALNUT CITY HALL



WALNUT LIBRARY



WALNUT SENIOR CENTER



SUZANNE MIDDLE SCHOOL



SUZANNE PARK



WALNUT GYMNASIUM / TEEN CENTER



WALNUT HIGH TENNIS COURTS



WALNUT HIGH SCHOOL



WALNUT HIGH ALL-WEATHER TRACK



MODEL A

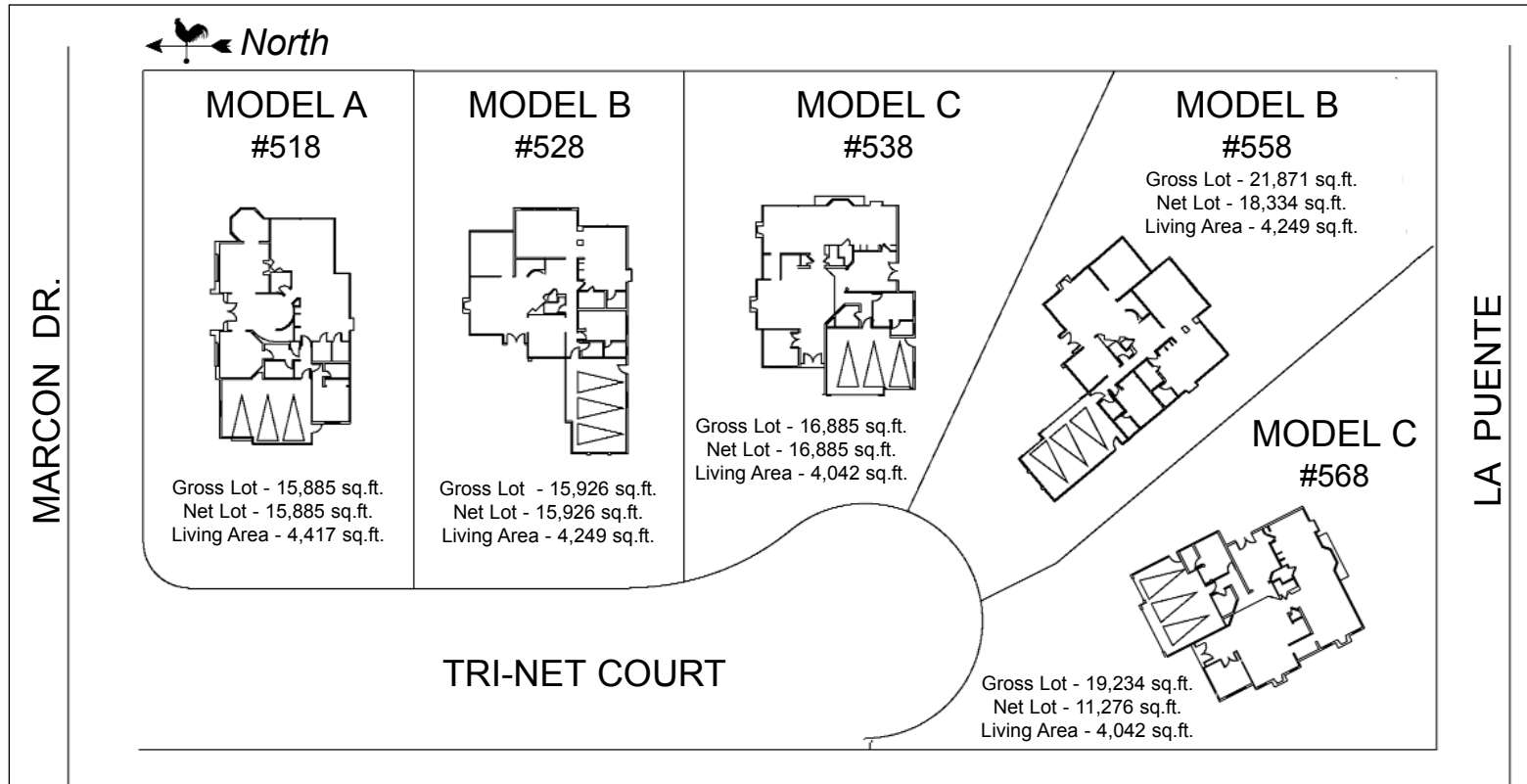


MODEL B



MODEL C

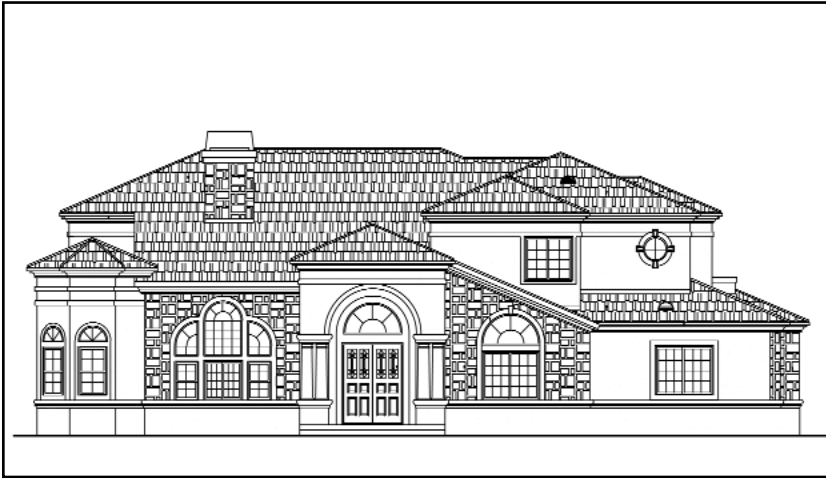
*A Good Foundation Will Last a Life Time.*  
**EXPLORE • INDULGE • ENJOY**



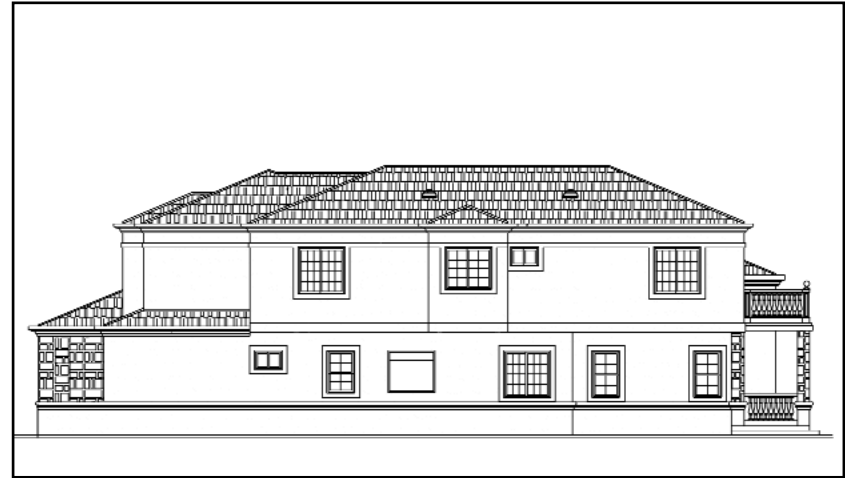
OVERVIEW MAP ( Not to Scale)

For more information on our new homes visit us at [www.tntdevelopment.com](http://www.tntdevelopment.com)

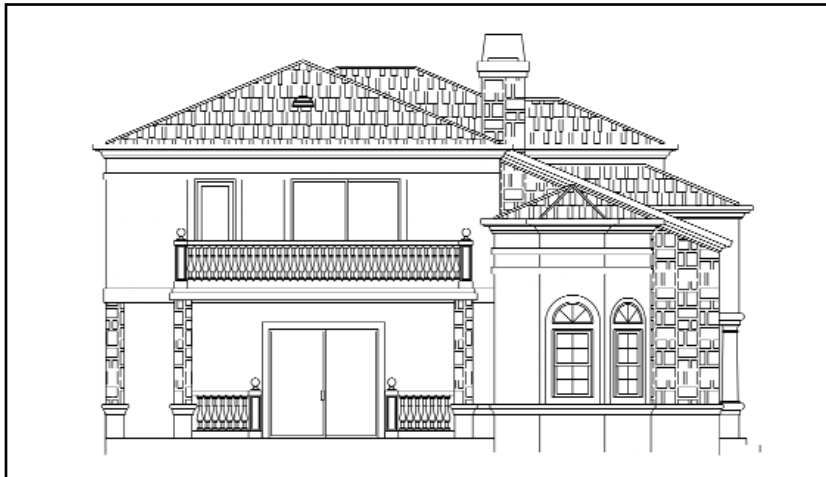
# *Residence A*



Front Side View



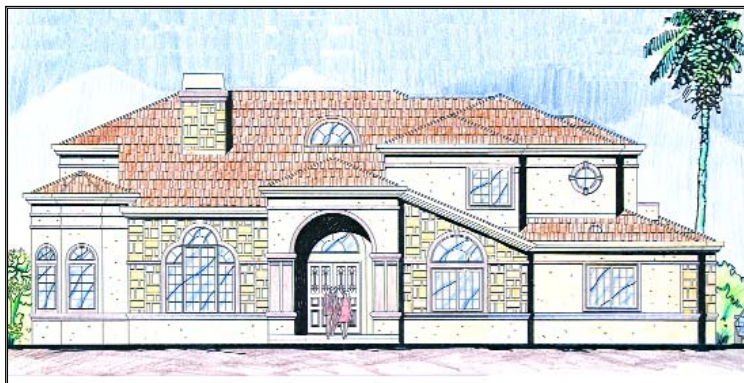
Rear Side View



Left Side View

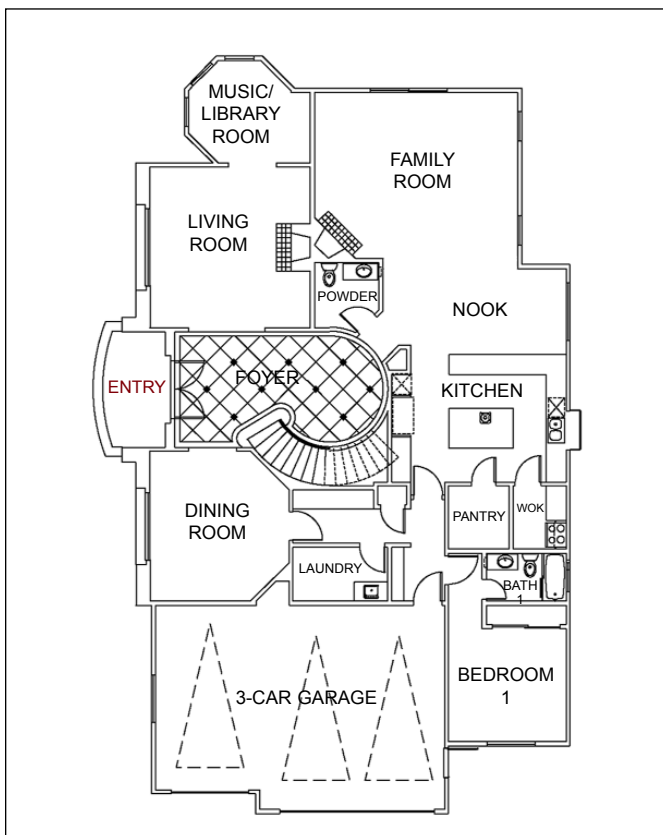


Right Side View

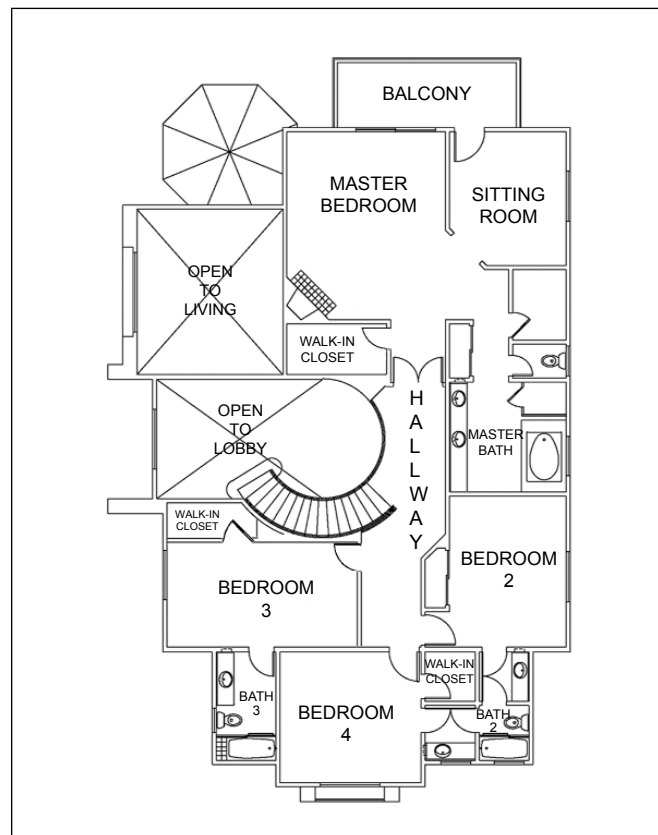


MODEL A

## FIRST FLOOR



## SECOND FLOOR



## Residence A

- Approx. 4,417 Sq. Ft.
- Two-Story
- Five Bedrooms
- 4 Full Bathrooms and 1 Powder Room
- Fire Places in Living Room, Family Room, and Master Bedroom
- Sitting Room and Balcony at Master Bedroom
- Music / Library Room
- Wok Room
- Breakfast Nook
- Metal Circular Stairway with Brass Rail Cap
- Skylight Forter
- Three-Car Garage
- Jacuzzi Bathtub in Master Bathroom



For more information on our new homes visit us at [www.tntdevelopment.com](http://www.tntdevelopment.com)

# Residence B



Front Side View



Rear Side View



Left Side View

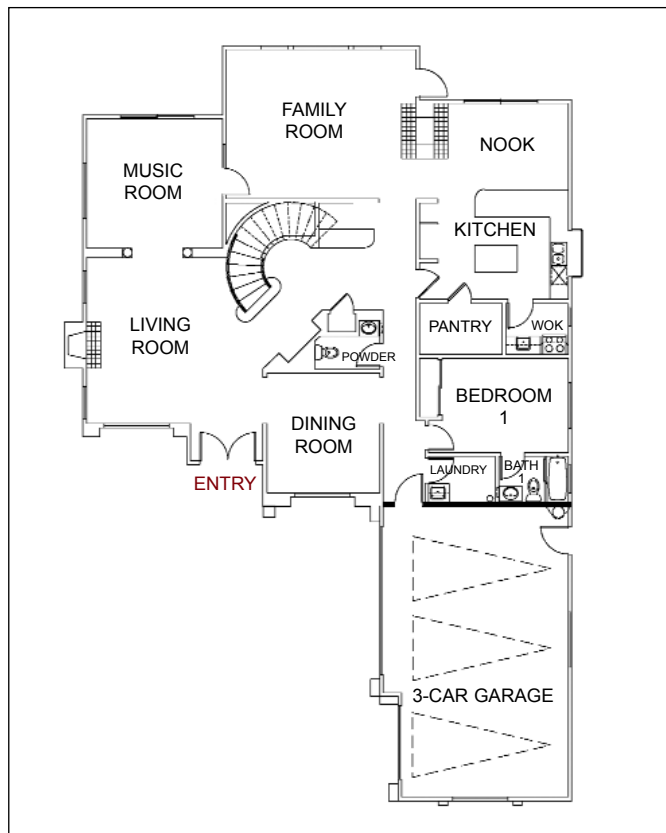


Right Side View

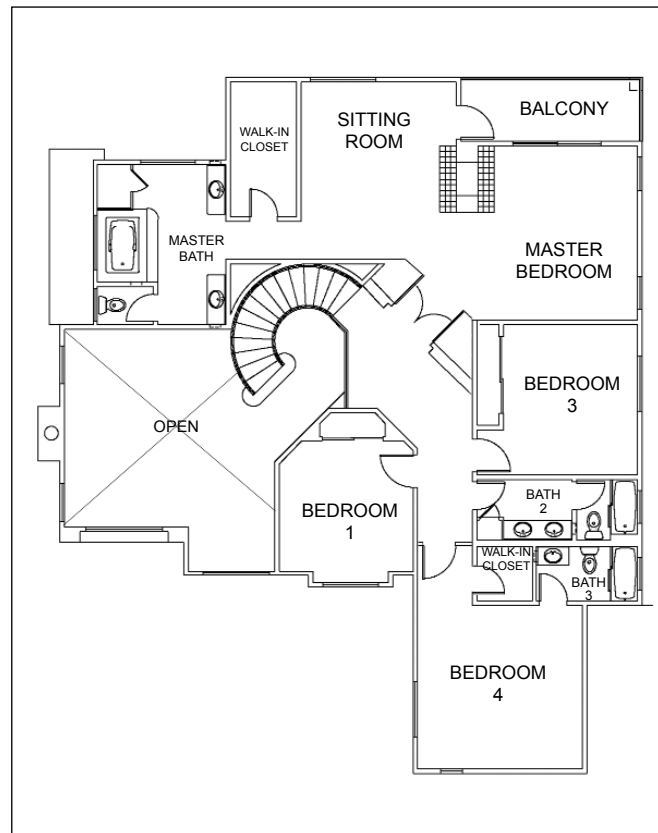


MODEL B

## FIRST FLOOR



## SECOND FLOOR



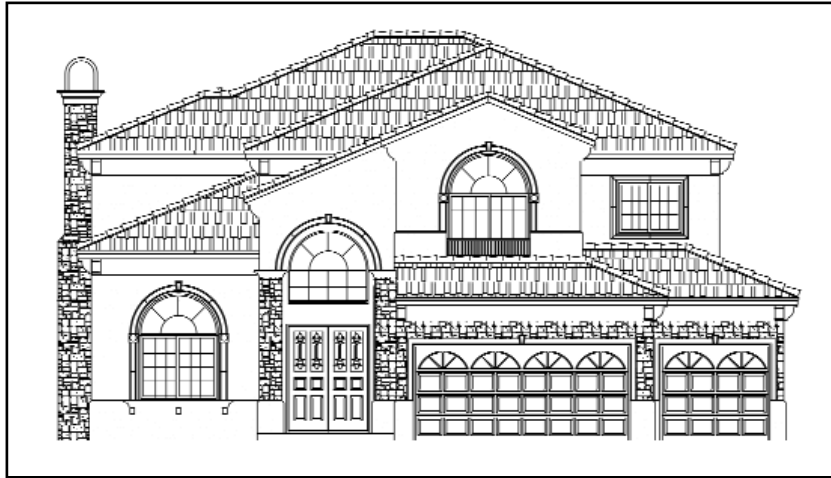
## Residence B

- Approx. 4,249 Sq. Ft.
- Two-Story
- Five Bedrooms
- 4 Full Bathrooms and 1 Powder Room
- Fire Places in Living Room, Family Room, and Master Bedroom
- Sitting Room and Balcony at Master Bedroom
- Music / Library Room
- Wok Room
- Breakfast Nook
- Maple Wood Circular Stairway
- Three-Car Garage
- Jacuzzi Bathtub in Master Bathroom



For more information on our new homes visit us at [www.tntdevelopment.com](http://www.tntdevelopment.com)

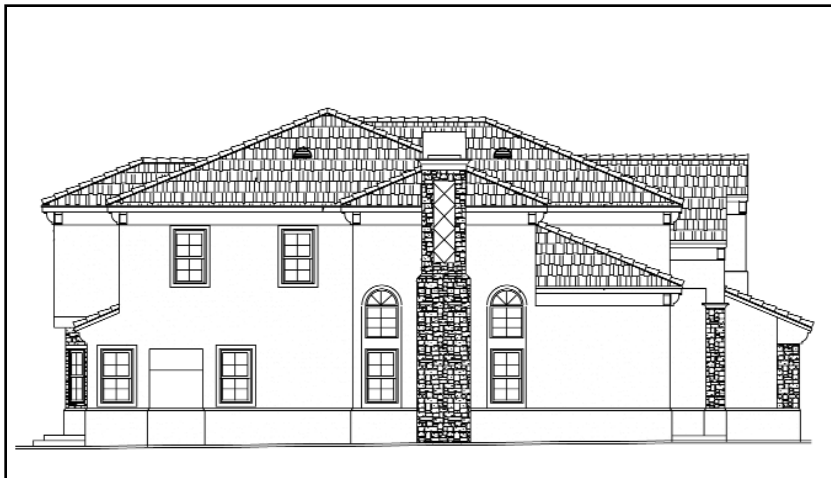
# *Residence C*



Front Side View



Rear Side View



Left Side View

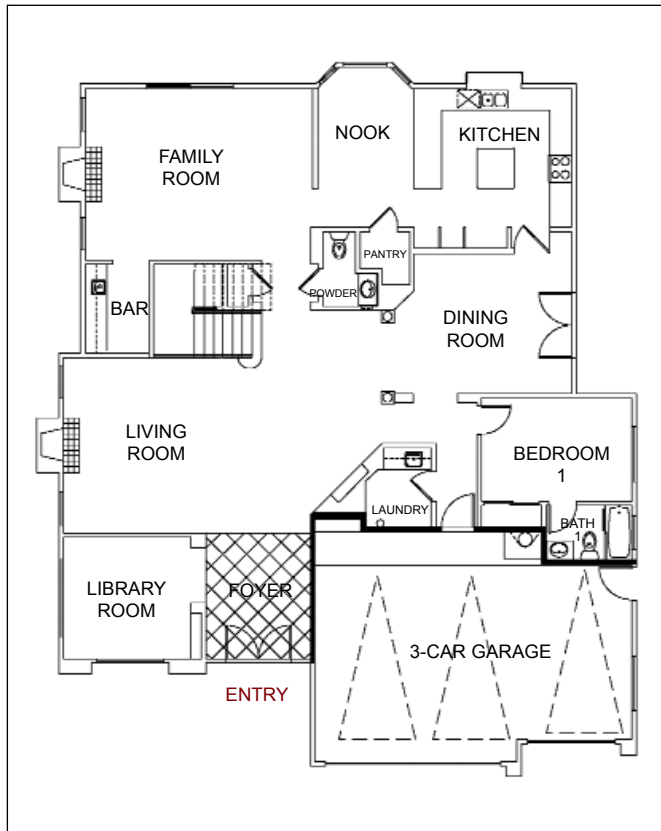


Right Side View

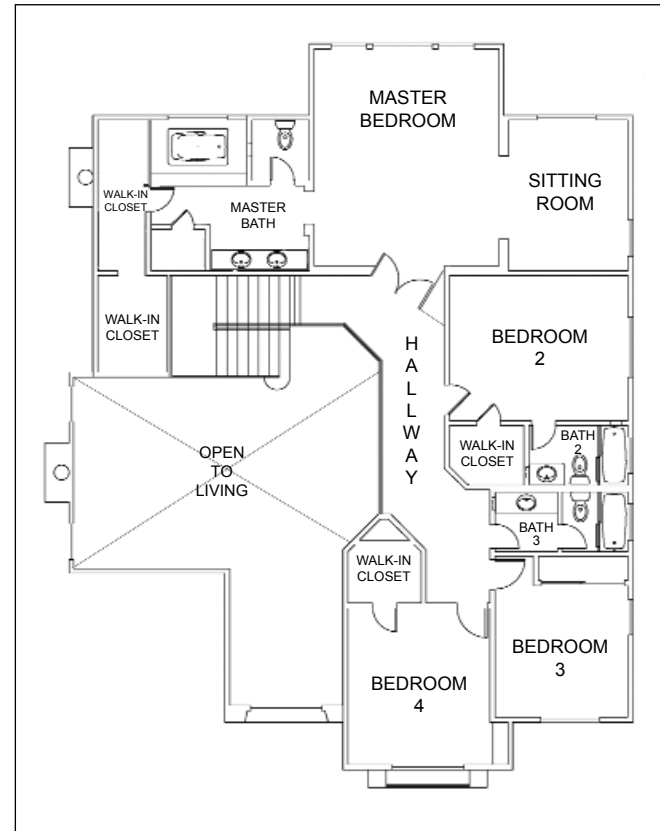


MODEL C

## FIRST FLOOR



## SECOND FLOOR



## Residence C

- Approx. 4,042 Sq. Ft.
- Two-Story
- Five Bedrooms
- 4 Full Bathrooms and 1 Powder Room
- Fire Places in Living Room and Family Room
- Sitting Room at Master Bedroom
- Music / Library Room
- Breakfast Nook
- Three-Car Garage
- Jacuzzi Bathtub in Master Bathroom



For more information on our new homes visit us at [www.tntdevelopment.com](http://www.tntdevelopment.com)

# *Amenities*

## **Interior Elegance & Spacious Comfort**

- Carpeting throughout major living areas, available in designer colors
- Intimate powder rooms with widespread faucets
- Three individualized floor plans to choose from, each designed to accommodate an active lifestyle
- Smoke detectors throughout
- Elegant wood baseboards and door molding
- Grand formal entry with marble flooring and crown molding
- Interior door hardware with polished brass/chrome finish
- Laundry room with built-in cabinetry
- Custom-designed recessed lighting throughout
- Decora white rocker style electrical switches
- Linen closets with ample storage
- Bull nose corners on interior walls
- Gas burning fireplace with tile hearths, glass doors and gas log lighter in living, family rooms and master bedroom (Models A & B)
- Formal dining room with soffit ceiling
- Skylight forter (Model A only)
- 3/4" Gypcrete over 2nd floor sheathing for sound proofing
- Marble slab vanity top in each bathroom and powder room

## **Dramatic / Distinctive Exterior**

- Richly blended exterior color palettes
- Fully finished garages with drywall and texture finish
- Dramatic eight foot double entry stain grade wood doors with leaded glass
- Grand cultured stone entry-ways
- Large front and rear yards
- Three car garages with insulated steel sectional roll-up garage doors and glass light with automatic operator
- Weather proofed exterior electric outlets
- Stone veneer exterior decoration
- Color coordinated concrete and fire resistant tile roofs
- Professionally landscaped front yards and community maintained areas
- Large pool size lots
- Rain gutter surrounding
- Designed stucco molding around window frames

## **Energy Efficiency**

- Energy efficient dual central air conditioning system with night set-back digital thermostat
- Energy-efficient gas appliances
- Dual-glazed windows throughout
- Cast iron waste line above 1st floor
- Gas forced air furnace with pilotless ignition
- Fully insulated exterior walls and roof

## **Gourmet Kitchens**

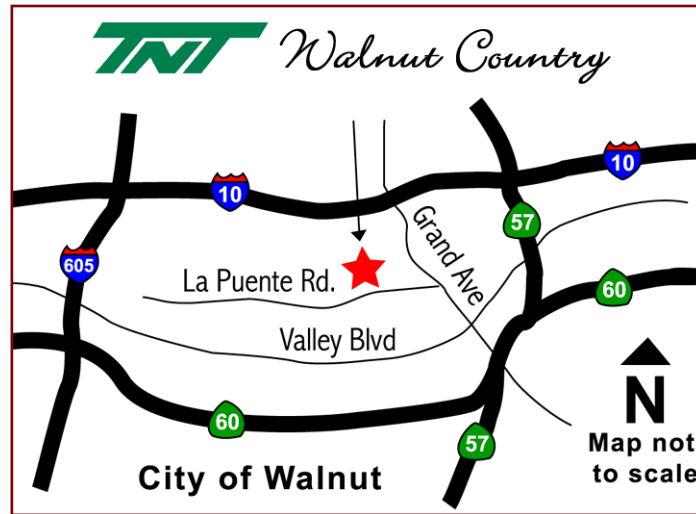
- Three compartment sinks with pull-out spray faucet
- Gourmet granite center islands for cooking, food preparation, and casual dining with extra storage space
- Top of line General Electric Monogram gourmet appliances include:
  - ~ Built-in cook top with five sealed gas burners
  - ~ Self cleaning electric convection oven
  - ~ Multi-cycled dishwasher
  - ~ Built-in microwave oven
  - ~ Heavy duty trash compactor
- Sunny breakfast nooks
- Large wok room with heavy duty exhaust fan built-in (Models A & B)
- Granite kitchen counters with full high backsplash
- Designer pull-out faucets
- Contemporary recessed lighting
- Custom cabinetry with concealed hinges, fixed and adjustable shelving, white laminated interiors, smooth glide drawers, and knobs

## **Master Bedroom Suites**

- Elegant roman-style tubs and separate showers with clear glass enclosures with ceramic tile surroundings
- Expansive walk-in closets with ample storage space, multiple shelf configurations, and shoe racks
- Comfortable, marble vanities with full length beveled mirrors
- Luxuriously oversized acrylic jacuzzi oval tubs
- Plastic laminated shelving
- Mirrored wardrobe doors
- Spacious oversized master bedroom suites with cozy retreats or balconies (Models A & B)
- Stylish plumbing fixtures and matching towel bars
- Compartmental medicine cabinets with beveled mirrors

## **Intelligent High Tech Attachment**

- Whole house is pre-wired cables for the following applications:
  - ~ Gigabit Ethernet: in house local area network
  - ~ High speed internet: DSL Access, Cable Modem
  - ~ Cable TV
  - ~ Satellite TV
  - ~ Telephone
  - ~ Modem, Fax
  - ~ Home Theater System
  - ~ Security system: one year free service
  - ~ Intercom system
  - ~ Future fiber optic application
  - ~ In-out door Security camera monitor system
  - ~ One year free Walnut Country website access
- User friendly cable patch system, from each room can access any of the above applications



**TNT Walnut Country, LLC.**

21709 Ferrero Parkway

Walnut, CA 91789

Phone: 888.598.8818

Fax: 909.594.8666

[www.tntdevelopment.com](http://www.tntdevelopment.com)



Prices, financing, plans, specifications, features, square footage, product availability and other terms are effective date of publication and subject to change without notice. Homes subject to prior sale. Square footage is approximate. See your tax advisor for details regarding reductions. All renderings, floor plans and maps are artist's conception and are not intended to be an accurate representation of buildings, fencing, walks, driveways or landscaping and are not necessarily to scale. Please consult a sales representative for details. For additional information regarding Walnut Country, LLC., please visit our website at [www.tntdevelopment.com](http://www.tntdevelopment.com).